

**MATERIAL**

Hardened AISI 431 stainless steel.

**ELASTIC ELEMENT**

Polyurethane (PUR).

**STANDARD EXECUTIONS**

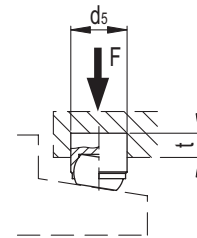
AISI 420C nickel-plated stainless steel ball:

- **GN 709.25-B**: ball with smooth and flat face, not reversible.
- **GN 709.25-BR**: ball with smooth and flat face, not reversible, with automatic return.

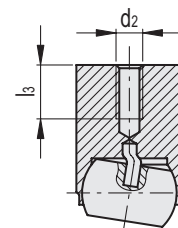
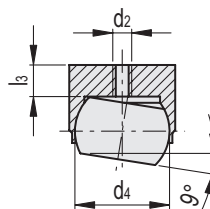
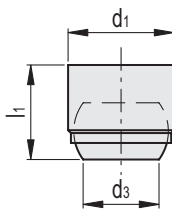
**FEATURES AND APPLICATIONS**

GN 709.25 clamping elements are used as mobile supports or for clamping workpieces.

Maximum inclination of the ball plane = 9°.



Conversion Table	
1 mm = 0.039 inch	
d1	
mm	inch
12	0.47
18	0.71
28	1.10



**GN 709.25-B**

**GN 709.25-BR**

**GN 709.25-B**

Code	Description	d1 n6	d2	d3	d4	l1 ±0.02	l3	d5 H7	t min.	Max. static load F [kN]	⚖️
GN.76301	GN 709.25-12-B	12	M3	7.2	10	11	3.2	12	6	10	8
GN.76311	GN 709.25-18-B	18	M4	10.5	16	17	4	18	8	25	28
GN.76321	GN 709.25-28-B	28	M5	20	25	25	5.5	28	13	90	107

**GN 709.25-BR**

Code	Description	d1 n6	d2	d3	d4	l1 ±0.02	l3	d5 H7	t min.	Max. static load F [kN]	⚖️
GN.76302	GN 709.25-12-BR	12	M3	7.2	10	17	3.2	12	12	10	16
GN.76312	GN 709.25-18-BR	18	M4	10.5	16	23	4	18	14	25	40
GN.76322	GN 709.25-28-BR	28	M5	20	25	34	6	28	22	90	150



Machine elements